

UNITED WAY OF BUCKS COUNTY ANNUAL REPORT 2024





We innovate with purpose

Patients will always inform and inspire our science-based innovations, which continue to change and save lives. Applying rigorous science with compassion, we will continue to confidently address the most complex healthcare challenges of our time and unlock the potential medicines and technologies of tomorrow.

Learn more at [jnj.com](https://www.jnj.com)

Johnson & Johnson

©JJSI2024

Table of Contents

ANNUAL REPORT

- Mission 3
- Diversity, Equity & Inclusion 5
- Message from Our CEO & Board Chair 7
- Your United Way Board & Staff 8
- By the Numbers 20
- Our Process 21
- Statement of Operations 22
- Expenditures Made Easy 23
- Member Agencies 25

AWARDS & RECOGNITION

- Board Excellence Award 11
- Thank You to Our Partners 27
- Thank You to Our Leadership Donors 31

MAKING AN IMPACT

- Stabilize Families 12
- Grow the HELP Center 14
- Fight Hunger 16
- Expand Education 18
- Ways to Give 39
- How to Get Help 41



12



16



18



Help us connect more families with affordable home internet.

Spread the word about Internet Essentials.




Internet essentials

Internet Essentials from Xfinity is the nation's largest and most comprehensive broadband adoption program, providing reliable, high-speed home internet to qualifying households for a low monthly price.

Households may qualify for Internet Essentials if they participate in programs like SNAP/EBT, Medicaid, or the National School Lunch Program.

By sharing in our mission, we can work together to empower even more individuals with the life-changing tools and resources they need to succeed in a digital world. Please share information about Internet Essentials with your community.

Internet Essentials offers customers:

-  Internet service with speeds of up to 50/10 Mbps for \$9.95/month with Internet Essentials OR speeds of up to 100/20 Mbps for \$29.95/month with Internet Essentials Plus
-  The option to purchase a subsidized new laptop for \$149.99
-  Free in-person, online, and printed digital skills training materials and classes

Visit partner.InternetEssentials.com to order complimentary marketing materials to help spread the word.



United Way of Bucks County MISSION

Since 1952, United Way has been improving lives in Bucks County by uniting donors, advocates, and volunteers around the common good. We seek out Bucks County's toughest challenges and work with others to develop strategies that will ensure real, lasting change. Then, we tackle those big challenges in a United Way.

OUR MISSION

United Way of Bucks County creates opportunities for quality education, financial stability, and good health to ensure real, lasting change for individuals and our communities.

OUR COMMITMENT TO BUCKS COUNTY

United Way fights for the health, education, and financial stability of every person in every community.

HOW WE DO IT

- We know quality education is key to success, so we expand access county-wide.
- We put access to healthy food first in our fight against hunger.
- We work to stabilize the whole family because when families thrive, so does Bucks County.
- We grow our HELP Center to fill gaps and meet immediate needs.

Together we **LIVE UNITED** and **UNITED**, we succeed.





Veolia Water Technologies & Solutions
is proud to **support** our communities
through the **United Way**.



United Way of Bucks County DIVERSITY, EQUITY, AND INCLUSION

Below is United Way of Bucks County's Diversity, Equity, & Inclusion Statement of Principle which outlines our commitment to building sustainable, inclusive, and resilient organizations and communities.



DIVERSITY, EQUITY, & INCLUSION STATEMENT

- We believe every person brings a unique perspective and experience to support our mission and advocate for health, education, and financial stability in our community.
- We welcome everyone in Bucks County to have equal access to our programs, resources, services, and facilities.
- We ensure that our policies and procedures are fair and equitable to our diverse members.
- We commit to advance our culture and business practices to be a model of diversity, equity, inclusion, and belonging.

ANTI-RACISM STATEMENT

United Way Bucks County stands against racism and ethnic discrimination in any form and we acknowledge that systems, policies, and institutional practices have perpetuated these problems in society. We are committed to advocating for social justice where all citizens experience equity and equality at all levels. We will focus our time, funding, and effort on improving conditions for those with the greatest need. With our donors, partners, and allies we will serve the community and fight to eradicate racism in all forms.

**These statements have been endorsed by the United Way of Bucks County Board of Directors.*



Partners in possibility.

Being your power company means so much more than keeping the lights on and natural gas flowing. It's about helping our communities thrive. That's why we are proud to sponsor United Way of Bucks County and share their vision of creating lasting change.

This is our home, too. And neighbors like you inspire us to make our communities even more vibrant, every single day.

Learn more at [peco.com](https://www.peco.com)



© PECO Energy Company, 2024. All rights reserved.

Message from CEO Marissa Christie & Board Chair Karen Johnson-Susko

"United Way of Bucks County fights for the education, financial stability, and health of every person in every community we serve."

"We're here for you, Bucks County."

When you see our vehicles on the road, you can't miss our mantra emblazoned across the side: **We're here for you, Bucks County.**

United Way of Bucks County fights for the education, financial stability, and health of every person in every community we serve. From Bristol and Bensalem to Dublin and Durham – and everywhere in between – we're here.

In 2023, we demonstrated this commitment by continuing to fill in gaps and create opportunities.

We increased our total number of Pre-K Counts scholarships by 44%. We established more community-based early education sites to ensure that no family in Bucks County lives more than 15 minutes from free Pre-K. Today, we support more than 400 young students and their families at a dozen sites. That means more children enter our K-12 schools ready to learn – and more parents can get to work and support their families.

We expanded services and products at our HELP Center. In 2023, visits to the HELP Center increased by nearly 200%. Thousands of neighbors got help with food, clothing, home goods, school supplies, and more – always brand new and always free of charge.

We provided more assistance than ever for households that are Asset Limited, Income Constrained, Employed (ALICE). ALICE, primarily our front-line workers, lives above the Federal Poverty Level but below our local "survival budget." Because they make "too much money," help is not available to them, even in a crisis. With your support, we changed that.

We also launched a program called Learn to Invest in your Future and Thrive (LIFT United). ALICE workers participate in free financial empowerment sessions. When they "graduate," we assist with a downpayment match and a secured low-interest car loan for a pre-owned vehicle. Our participants are increasing their credit scores, missing fewer days of work and school, and



breathing easier knowing that they finally have affordable and reliable transportation.

We are proud of all we accomplished over the past year, but we still have a lot to do.

In the coming years, more ALICE workers than ever before will need assistance to remain stable and stably employed.

Many low- and moderate-income households are accruing significant debt simply to live. That, combined with the high cost of living and lack of affordable housing, is building towards a true crisis.

We need to start working on this now. We need more people to be "allies for ALICE." We need to expand our HELP Center to meet growing needs. We need to prepare our future leaders and that starts young. As young as Pre-K.

Thank you for being a part of our journey. Your generosity and support make our work possible.

Together, we will navigate the future with strength, unity, and unwavering commitment, ensuring that no one faces hardship alone and that everyone has the opportunity to succeed.

Together, we can continue to say, "We're here for you, Bucks County,"



Marissa Christie
President & CEO



Karen Johnson-Susko
Board Chair

Your United Way Board & Staff



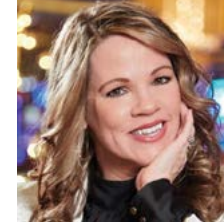
Kevin Antoine
Board Member
Associate Vice President, Bucks County Community College



Dr. Michelle Burroughs
Board Member
Senior Vice President, Chief Diversity Officer, WSFS Bank



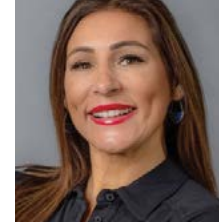
Shannon Hibbs
Assistant Director, Student & Family Services



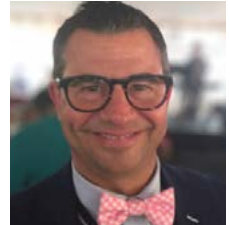
Carrie Nork Minelli
Board Member
Director of Advertising & Public Relations, Parx Casino



Chris Porcelli
Director of Development



Dana Weissenberg
Board Member
Senior Sales Executive, Business Owner, Publisher, SiriusXM Media & Newtown City Lifestyle



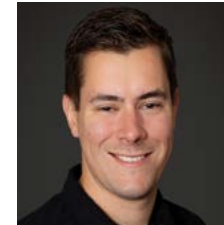
Rick Battaglia
Board Member
Director of Sales & Business Development for Commercial Banking, Penn Community Bank



Marissa Christie
President & Chief Executive Officer



Karen Johnson-Susko
Board Member, Board Chair
Senior Director Operational Excellence - Supply Chain, Veolia Water Technologies and Solutions



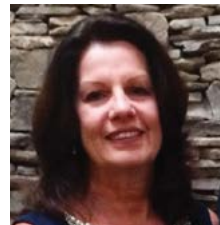
PJ O'Brien
Impact Director, Financial Stability



Sheri Ratner
Impact Director, HELP Center



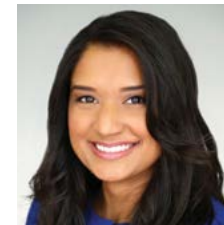
Randy Beaman
Board Member
Vice President, Relationship Manager, Commercial Banking, Univest Bank and Trust Co.



Colleen Doll
Board Member
Community Volunteer, Retired



Jeffrey Lehocky
Board Member
EVP-CFO, QNB Bank



Purvi Panwala
Board Member
CHO, CHIA, and Co-Founder, PPM Corporation



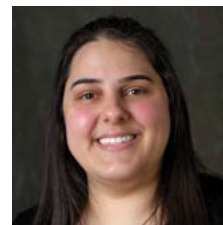
Marc Sabo
Board Member
Director of Product Oversight and Governance, BlackRock



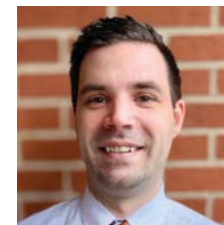
Paul Bencivengo
Immediate Past Board Chair
President/COO, Visit Bucks County



Kristen Elder
Board Member, Treasurer
CPA and Finance Leader



Katie Matarazzo
Executive Assistant & Project Manager



Brian Papsun
Board Member
Managing Director, Grant Thornton



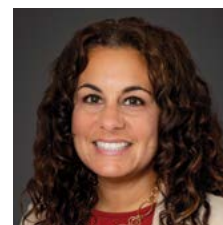
Tom Sofield
Board Member
Publisher, Levittown Now



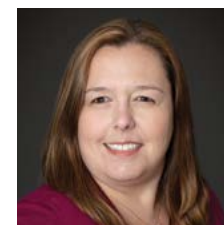
Paul Braun
Board Member, Corporate Secretary
Sr. Director, Business Development, Comcast Technology Solutions



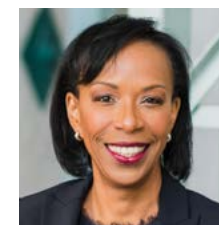
Nikki Fariior, LSW
Impact Services Manager



Kristi Moreno
Impact Director, Pre-K Education Programs



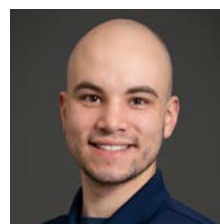
Faith Parkinson
Director of Finance & Administration



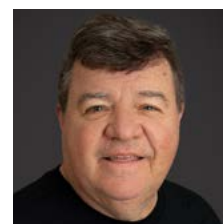
Tiffany Thomas-Smith, Esq.
Board Member
Partner, Family Law & Adoption, Curtin & Heefner, LLP



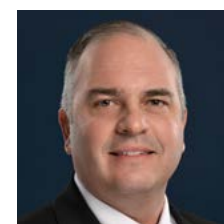
Justin Brown
Board Member
Business Unit Director, McAdoo & Allen, Inc., Quaker Color Division



Scott Frantz
HELP Center Associate



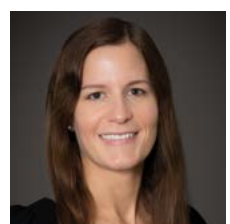
John Mullen
HELP Center Operations Manager



Dennis Pfleiger
Board Member
President, St. Luke's Upper Bucks



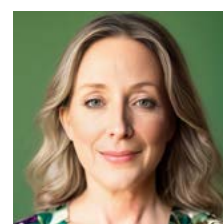
Bernard Tynes
Board Member, Vice Chair, Nominating Committee
EVP/Chief Experience & Impact Officer, Penn Community Bank



Christina Burner
Marketing & Development Manager



Matt Hanson
Board Member, Vice Chair Community Impact
VP - Senior Regional Manager, Police and Fire Federal Credit Union



Amy Musolino
Board Member
Executive Marketing Leader



Dr. David Pocalyko
Board Member
Senior Director, Janssen Research & Development



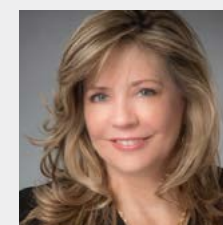
Anthony Velez
Assistant Director, Grant Administration, Education

HONORARY LIFE MEMBERS

Todd Alderfer
Jacqueline Bowers
Dr. Gary L. Bowman
Kathy Brett
Lynn T. Bush
Richard O. Coe
Michael Connor
Karen Dawkins
J. Peter Dominick
Thomas P. Donnelly, Esq.
James Dowling
Grover Friend
David J. Gondak
Brian Jeter
Trish Markel-Mulligan
Jack McCaughan
Catherine McElroy
Mark Worthington

ADDITIONAL TEAM MEMBERS

Maria Evan
Director of Development (through 1/3/24)
Tim Philpot
Impact Director, Health (through 6/30/23)
Aidan Ryan
Relationship Manager (through 3/30/24)
Raymond Santiago
Director of Development (through 8/3/23)
Jeane Vidoni
Vice Chair, Community Impact (through 5/5/23)



In Memory of Julia Amo
Board Member



At Univest, we firmly believe in giving back to the local communities we serve. For nearly 150 years, it's been our way of making a difference each day, through helping to improve the quality of life for our friends and neighbors. Because local values are as important to us as they are to you.

univest.net | 877.723.5571



Board Excellence Award PAUL BENCIVENGO

Our Board of Directors is composed of dedicated people who make sure everything we do connects back to our mission – creating opportunities for quality education, financial stability, and good health to ensure real, lasting change for individuals and our communities.

The Board Excellence Award pays homage to the Kelton and Sauerbry Awards. These past awards were named after Dr. Stanton Kelton and Paul Sauerbry, who exemplified what it means to serve our community over their years of service with the organization. The Board Excellence Award combines those awards to recognize a board member who excels both in board leadership and service to the community by advancing United Way's mission.

This year, Paul Bencivengo is being honored for his dedicated service to United Way of Bucks County. Paul joined the Board of Directors in 2018. In 2021, Paul was elected as the Nominating and Governance Chair and made an incredible impact on the trajectory of our board, increasing our membership and creating a diverse and dynamic group of dedicated individuals who support our organization. Paul was elected as Board Chair in 2022 and served until May 2023. This year, he will transition into Honorary Lifetime status. Paul is a member of the HELP Center Expansion Team, Nominating and Governance Committee, and Resource Development & Marketing Committee.



Paul's colleagues say, "Paul has dedicated countless hours to UW Bucks during his time on the board and has been a tireless advocate for not only the residents of Bucks County but the mission of UW Bucks. His expertise in marketing has been invaluable in helping position the organization in the community. The overall knowledge of Bucks County and its inner workings he brings has provided UW Bucks with unique opportunities to elevate our mission with county leaders. I believe that Paul is an ambassador for the United Way. He is engaged in all activities and makes sure he is present for all the meetings. Paul truly cares about the future of the organization."

How did you first get involved with United Way? Why were you interested in joining the board? Two former UW Bucks board members, Brian Jeter and Bob Caruso, asked if I would be interested in joining the board. Unbeknownst to them, I was looking for an opportunity to support the local community and see how I could help make a difference in Bucks County. I was familiar with the organization by name but was absolutely "all in" once I learned of all the programs and support facilitated by the United Way of Bucks County.

What aspect of board leadership has been most rewarding? Serving as Board Chair was an honor, but it was my time as Nominating Chair that was very rewarding. I was able to help identify and recruit board members to join United Way of Bucks County. The board and team are full of smart and compassionate professionals looking to do whatever they can to support those in need in Bucks County.

How can we inspire the next generation of donors, advocates, and volunteers? To inspire the next generation of donors, advocates, and volunteers in Bucks County, we need to tap into their passions and encourage them to make a meaningful impact. By continuing to share compelling stories and showing the life-changing results of philanthropic efforts, we can demonstrate the real-world impact of giving back to the local community.

Collaborating with local Bucks County schools and youth organizations to create service-learning programs and volunteer initiatives can help cultivate a culture of civic engagement from an early age. Offering mentorship and leadership development opportunities can empower young individuals to take on active roles as advocates and future leaders in Bucks County's philanthropic community.

What is your hope for the future of Bucks County? My hope for the future of Bucks County is centered on a strong sense of community unity and financial stability while preserving our natural environment as we embrace economic development.

I envision Bucks County as a place where residents continue to support one another, and welcome visitors and businesses thrive. I hope to see investments in education and innovation, ensuring that Bucks County remains a hub of knowledge and creativity, while also prioritizing infrastructure development to meet the evolving needs of our growing community. I aspire for Bucks County to be a destination of cultural enrichment, celebrating our differences through arts and community events, and prioritizing the health and well-being of all residents.

I believe Bucks County can continue to flourish as a place where people love to live, work, and play.

Making an Impact: STABILIZE FAMILIES



We work to stabilize the whole family because when families thrive, so does Bucks County.

27% of Bucks County residents are ALICE (Asset Limited, Income Constrained, Employed). Overwhelmingly our frontline workers, ALICE earns too much to qualify for assistance from most programs, yet not enough for unexpected expenses.

At UW Bucks, we are committed to stabilizing ALICE families

because when they are in crisis, it impacts our entire community. Our programs are specifically designed to close gaps for them.

OUR PROGRAMS

United for ALICE

When you're living paycheck-to-paycheck, even one financial setback can be catastrophic. United for ALICE provides emergency assistance to working families so short-term challenges don't spiral out of control.



MAKING AN IMPACT: STABILIZE FAMILIES

50

50 ALICE families received financial stability support through United for ALICE and LIFT United.

549

Individuals were served through the Emergency Needs Fund in 2023.

1,764

Older kids and teens in need received holiday help through the Gift Card Drive in 2023.

My Free Taxes

For the 14th year, United Way provides free tax filing software accessible through MyFreeTaxes®. ALICE families (income under \$79,000) can easily and accurately file simple federal and state tax returns for free.

Gift Card Drive

When families struggle during the holidays, there is a lot of help for young kids – but older children and teens are often overlooked. Our Holiday Gift Card Drive ensures that every young person in Bucks County has a bright holiday by providing them with gift cards.

LIFT United

LIFT (Learn to Invest in your Future and Thrive) United helps individuals build their financial skills, boost their credit scores,

and either refinance their current car loan to a lower rate or secure a low-interest used car loan and help with a down payment.

Emergency Needs Fund

The Emergency Needs Fund helps local families with things like utilities, rent, and transportation so a one-time issue doesn't result in homelessness – or getting caught in a cycle they can't break.

Emergency Food and Shelter Program

EFSP provides shelter, food, and supportive services for residents experiencing non-disaster-related emergencies. UW Bucks administers this federal program locally, providing funding to eligible agencies.

Making an Impact: Grow the HELP Center HEALTHY EATING & LIVING PARTNERSHIP



We fill gaps for families in need so they can focus on building self-sufficient futures.

Located in Bristol, the HELP Center (a Healthy Eating and Living Partnership) is an 8,000-square-foot warehouse, distribution center, and shop for our gifts-in-kind program.

Our HELP Center serves the Bucks County community by providing necessities like cleaning supplies, personal hygiene items, clothing, food, and home goods – all brand new and free of charge – to families in need and to 120+ partners, including schools, faith-based groups, and nonprofits.

The HELP Center is a collaboration between three nonprofit agencies: United Way of Bucks County, Bucks County Opportunity Council, and St. Mary Medical Center. Penn Community Bank provides generous support for the project.

HOW YOU CAN GET INVOLVED

Community Collections

Every quarter, dedicated volunteers come together to organize drives and collect brand-new items for the HELP Center. We see support from all corners of the community, including neighborhoods, groups of friends, places of worship, and scout groups.

Items needed include personal hygiene products, non-perishable food, supplies for babies and young children, cleaning supplies, home goods, and more. If it's something you use at home, our shoppers likely need it too! The HELP Center only accepts new items in original packaging to provide a dignified shopping experience for those in need.

Volunteer

Our HELP Center is always in need of volunteers. Volunteers assist with general operations, processing donations, displaying merchandise, and providing excellent customer service to our shoppers.

To get involved with the HELP Center or learn more, visit uwbucks.org/help-center.



MAKING AN IMPACT: HELP CENTER

79,500+

People in need county-wide served by the HELP Center in 2023.

\$2.2 MILLION

Worth of in-kind goods brought into the HELP Center and distributed to neighbors in need in 2023.

3,335

Hours of service donated by dedicated volunteers.

TANIA'S STORY

The HELP Center is a lifeline for families in crisis, like Ukrainian refugees resettling in Bucks County – most of whom arrive with virtually nothing. Tania is one of them.

Tania's family fled Kharkiv, Ukraine, on the day the bombing began. Starting over in Bucks County from scratch, they were connected to the HELP Center by a local pastor.

Tania was amazed and deeply grateful when she visited HELP. She couldn't believe she could shop for everything her family needed, from clothing to bedding. The item that meant the most to her was a brand-new kitchen table. It became the centerpiece for family meals, bringing a sense of normalcy and togetherness back into their lives.

While families like Tania's still face many challenges, the HELP Center is there to fill in the gaps and support them as they rebuild their lives.



Making an Impact: FIGHT HUNGER



We put access to healthy food first in our fight against hunger.

When families struggle to make ends meet, healthy food is almost always the first thing to go. Unfortunately, that can cause long-term health issues, particularly for children and folks with chronic illnesses.

At United Way of Bucks County, we build sustainable programs like Fresh Connect and Bucks Knocks Out Hunger to provide nutritious food – and nutrition education – year-round and county-wide.

OUR PROGRAMS

Bucks Knocks Out Hunger

Bucks Knocks Out Hunger is a community-driven hunger-fighting project. It is a fundraiser for local food pantries, a county-wide food drive, and a one-day meal-packing event. Each year, thousands of donors, advocates, and volunteers unite to fight food insecurity and ensure lasting health in Bucks County.

Fresh Connect

Our free, mobile farmers market brings healthy options like fresh produce, eggs, and dairy to the same four locations in Bucks County each week, year-round.

Senior Food Boxes

The Senior Food Box Program improves the health of low-income seniors by supplementing their diets with fresh produce, delivered directly to their doors or a senior center they visit regularly.



HELEN'S STORY

Helen never thought she would need help from a program like Fresh Connect at this stage in her life. At first, she felt embarrassed – but from the first trip to our site in Bristol, she was met with welcoming smiles and encouragement.

Like many seniors, Helen can't afford the amount of fresh and healthy food that her diet needs, even with help from SNAP. No matter how hard she tries, she just can't stretch her food budget to last the whole month.

Since coming to Fresh Connect, Helen is eating healthier and feeling better both physically and mentally. Access to fresh fruits and vegetables has rekindled her love for cooking, and she now enjoys trying recipes from her old cookbooks.

"I thank everyone who is a part of this wonderful endeavor. You are not only feeding my body, you are also feeding my spirit," Helen said.



725,000+

Pounds of produce distributed to our food-insecure neighbors through Fresh Connect.

1 MILLION

Shelf-stable meals packed by volunteers at BKO Hunger since its inception in 2012.

466

Seniors had their diets supplemented with nutritious options through the Senior Food Box Program in 2023.

Making an Impact: EXPAND EDUCATION



We know quality education is key to success, so we expand access county-wide.

When families don't have access to affordable early education and care, it impacts the child, the parents, and our entire local economy.

For younger children, we offer hyper-local, community-based options like Pre-K Counts and private Pre-K scholarships, covering most or all of a family's costs. Older kids get the supplies they need to succeed in school through Stuff the Bus.

OUR PROGRAMS

Pre-K Counts

We help children get on a path to academic success with the Pennsylvania Pre-K Counts program. Through Pre-K Counts, we provide high-quality early education to 3- and 4-year-olds

at no cost to eligible families, giving our youngest neighbors a strong start in school and life. With 16 Pre-K sites county-wide, every family in Bucks County is within a 15-minute drive of our services.

Private Pre-K Scholarships

Every \$1 invested in early childhood education saves up to \$17 long-term and generates \$1.79 in economic activity immediately. That's why we provide private Pre-K scholarships



MAKING AN IMPACT: EXPAND EDUCATION

to children in need through the Educational Improvement Tax Credit (EITC) and United Way funding. These flexible scholarships support working families who might not qualify for other sources of financial help.

Stuff the Bus

When a child starts school with a backpack full of the supplies they need, they can focus on what really matters – learning. Stuff the Bus, our school supply drive for children in need, gives kids the tools and confidence that they need to excel in the classroom.

KATELYN'S STORY

Katelyn's voice trembled on the phone the first time we spoke to her. Her 4-year-old son, Liam, has developmental delays. Katelyn is a single mom and works in healthcare. Like more than 1 in 4 Bucks County residents, she is ALICE (Asset Limited, Income Constrained, Employed).

Katelyn makes well above the poverty line, but still struggles with the cost of living in our community. She couldn't find a Pre-K that could accommodate her son's special needs, her long shifts – and their limited budget. As a result, she was missing work and about to lose her job. "My kids are my world," she said. "I am failing them."

Our early education team immediately enrolled Liam in our free Pre-K Counts program. He's in a high-quality site close to home and thriving. Liam's site even has special sensory rooms, which have been a game-changer for him. "I feel like I can finally catch my breath," Katelyn said.

\$4.5 MILLION

Invested in Pre-K education including Pre-K Counts and Pre-K scholarships.

718

Vision and hearing screenings provided to children enrolled in Pre-K Counts programs, free of charge.

3,355+

Children in Bucks County received a backpack filled with brand-new school supplies through Stuff the Bus in 2023.

Making an Impact: BY THE NUMBERS

United Way fights for the health, education, and financial stability of every person in every community. Here is how our programs are making an impact.



\$4,523,294

Invested in Pre-K education including Pre-K Counts and Pre-K scholarships.



725,000+

Pounds of fresh, healthy produce distributed through Fresh Connect.



79,500+

People in need county-wide served by the HELP Center in 2023.


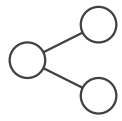












\$90,045

Value of time provided by UW Bucks volunteers

Making an Impact: OUR PROCESS

How do we decide where and how to make an impact in Bucks County?

<p>1</p>  <p>NEEDS</p> <p>We verify a demonstrated need exists that aligns with our mission.</p>	<p>2</p>  <p>ROLE</p> <p>We identify a unique role for UW Bucks to fill.</p>	<p>3</p>  <p>PARTNERS</p> <p>We find strong and trusted partners with shared goals.</p>	<p>4</p>  <p>SERVICES</p> <p>We avoid duplication of services.</p>
 <p>5</p>  <p>PROGRAMS</p> <p>We seek out high-impact programs.</p>	<p>6</p>  <p>EXCELLENCE</p> <p>We strive for excellence in program delivery.</p>	<p>7</p>  <p>OUTCOMES</p> <p>We confirm that outcomes are measurable.</p>	
<p>8</p>  <p>DIVERSITY</p> <p>We ensure that diverse populations are served.</p>	<p>9</p>  <p>FUNDING</p> <p>We solidify funding.</p>	 <p>10</p>  <p>REEVALUATE</p> <p>We continuously reevaluate to ensure our programs meet all criteria.</p>	

United Way of Bucks County STATEMENT OF OPERATIONS (Pre-audit)

For the Year Ended 12/31/2023

PUBLIC SUPPORT AND REVENUE

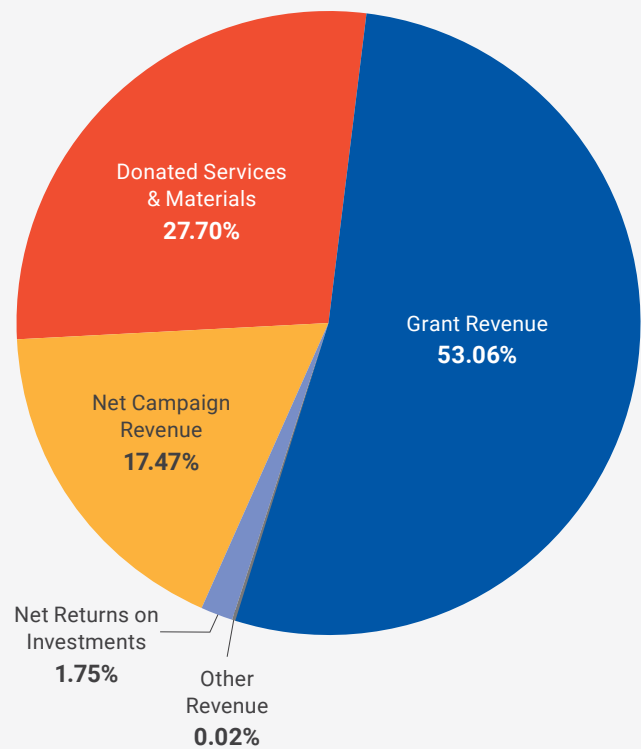
Net Campaign Revenue	
Gross Campaign	1,468,517
Less: Donor Directed Gifts	(11,908)
Less: Provision for Uncollectibles	(53,926)
Net Campaign Revenue	1,402,683
Grant Revenue	4,259,201
Donated Services & Materials	2,223,630
Other Revenue	1,964
Net Returns on Investments	140,355
Public Support and Revenue	8,013,383

EXPENDITURES

Community Impact Expenses	
Distributions to Bucks County	1,396,582
Less: Donor Directed Gifts	(11,908)
Monetary Investments	1,384,674
Community Initiatives, including Grants	4,259,201
Donated Services & Materials	2,223,630
Individual Services	35,282
Program Services	20,123
Full Investment in Bucks County	7,922,910
Resource Development	325,441
General & Administrative	178,158
United Way Support	49,314
Expenditures	8,475,823
Net Surplus/(Deficit)	(447,990)

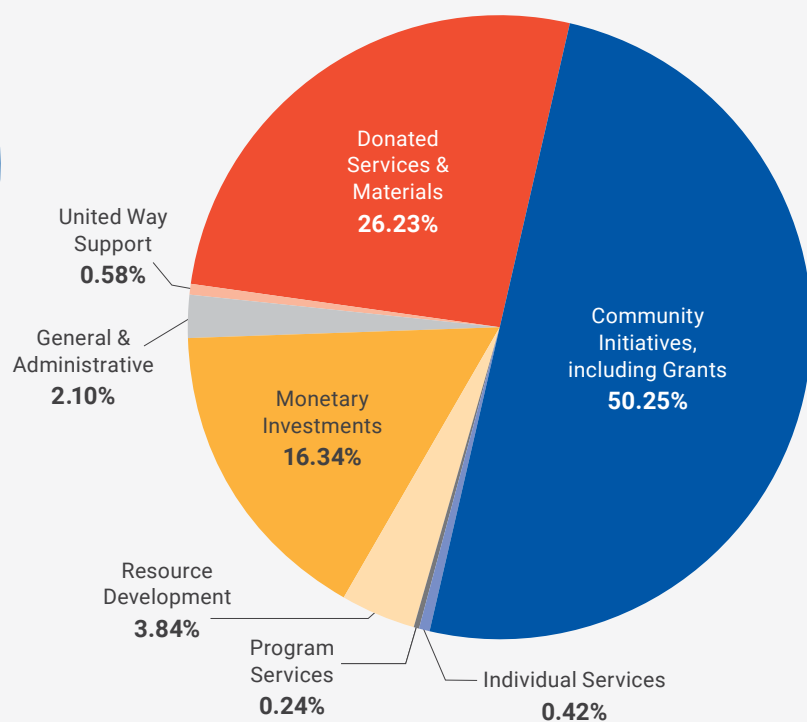
PUBLIC SUPPORT & REVENUES, BY SOURCE

as a percentage of Total Revenue



EXPENDITURES

as a percentage of Total Expenditures



United Way of Bucks County EXPENDITURES MADE EASY

Each year, our Statement of Operations and Form 990 provide insight into what we raise and what we spend. They are important because they provide transparency but can be hard to understand when they are just numbers on a page.

Our total and direct investment in Bucks County is over \$7.9 million.
Here is a quick guide to our major “expenditures” in 2023:

\$1.4 MILLION

Monetary Investments

This covers many programs in Bucks County, like **United for ALICE**, which supports households who live below the survival budget but earn too much to qualify for public assistance (see page 12), and our **HELP Center**. This also includes **Fresh Connect**, our free, mobile farmer’s market; **Emergency Needs**, for immediate help with rent, utilities, transportation, and necessities; along with other investments. Food distributed through **Bucks Knocks Out Hunger**, supplies distributed through **Stuff the Bus**, and **Holiday Gift Cards** for teens in need are also captured here.

\$12,000

Donor Directed Gifts

Locally and through the larger United Way network, we raise money that goes directly to nonprofits that make a local impact. These gifts are earmarked by the donor for a specific program or service.

\$4.3 MILLION

Community Expenditures, Including Grants

This goes to **Pre-K Scholarships** for low- and moderate-income families. We invest heavily in this area because this is often a family’s largest expense – and it is one of the best investments we can make. Children who get scholarships to attend our high-quality Pre-K partner sites are prepared to succeed when they enter Kindergarten, giving them the best chance at long-term academic success. Plus, these scholarships mean that parents can get to work and provide for their families. Funding for the **Bucks United Flood Recovery (BUFR)** program is also included here.

\$2.2 MILLION

Donated Services and Materials

Distributed through our **HELP Center** in Bristol (see page 14), our “donated materials” are almost entirely the value of **home goods**, which go to **families in need**. For example, families who are moving from the homeless shelter to a place of their own can “shop” for necessities with their case worker. They can select linens, kitchenware, and many other items. Thanks to our relationships with local retailers and a program called Good 360, all items are brand new (usually discontinued or open box returns).

\$35,000

Individual Services

We chair the local board and act as fiscal agent for the federally funded **Emergency Food and Shelter Program**. Each year, the amount of funding allocated to nonprofits in Bucks County varies. We ensure that funds are distributed as quickly, fairly, and efficiently as possible.

\$20,000

Program Expenses

Any additional costs to run the programs that are directly related to our mission fall into this category. Every program we invest in helps us advance our goal of creating opportunities for **quality education, financial stability, and good health** in Bucks County.

We're honored to support the United Way of Bucks County.

Caring for the community starts with providing support for the people who live in it. So we're proud to work with the United Way of Bucks County. Together, we can inspire and build better lives and communities.



Truist.com

Truist Bank, Member FDIC. © 2024 Truist Financial Corporation. TRUIST, the Truist logo and Truist Purple are service marks of Truist Financial Corporation. All rights reserved.

United Way of Bucks County MEMBER AGENCIES

United Way of Bucks County brings people together for the greater good. Our partners now include 66 nonprofit Member Agencies, all of whom provide human services that help people right here in Bucks County. All organizations have been vetted by United Way staff and volunteers.

United Way members enjoy many benefits including access to resources, enhanced credibility, publicity and awareness, networking, and other special opportunities. You can learn more about becoming a United Way Member Agency by visiting uwbucks.org/become-a-member.



- | | | | |
|--|--|---|---|
| A Woman's Place | Children's Developmental Program, Inc. | Lenape Valley Foundation | Quilts for Kids, Inc. |
| Advocates for the Homeless & Those In Need (AHTN) | CO-Mans, Inc. | Libertae, Inc. | Rolling Harvest Food Rescue |
| Advocates for the Homeless in Upper Bucks | Coalition To Shelter and Support the Homeless | LifeSpan | Salvation Army, Lower Bucks Corps. |
| Aldie Foundation, Inc. | Credit Counseling Center | Livengrin Foundation | Salvation Army, Upper Bucks |
| Along the Way | Diakon Child, Family, and Community Ministries | Lower Bucks Community Centers, Inc. | Single Parent Fellowship |
| Ann Silverman Community Health Clinic | Easterseals of Southeastern Pennsylvania | Maternity Care Coalition | The Children's Home Society of New Jersey |
| Big Brothers Big Sisters of Bucks County | Emergency Relief Association | Mental Health Partnership | The Council of Southeast Pennsylvania, Inc. |
| Bucks County Association for the Blind and Visually Impaired | Family Promise of Lower Bucks | Merakey | The Fiaria Project |
| Bucks County Children and Youth Social Services | Family Service Association of Bucks County | Mitzvah Circle | The Ivins Outreach Center |
| Bucks County Housing Group | Good Friends, Inc. | NAMI Bucks County | TLC Childcare Center |
| Bucks County Opportunity Council, Inc. | Habitat for Humanity of Bucks County | Network of Victim Assistance (NOVA) | Trinity Christian Academy |
| Bucks County Workforce Development Board | Hands Holding Hearts | No Longer Bound, Prevention & Training Services | Twilight Wish Foundation |
| Bucks for Kids | Jewish Relief Agency | One House at a Time | Valley Youth House |
| Caring For Friends | Keystone Opportunity Center | PA CareerLink | Vita Education Services |
| Catholic Social Services | Legal Aid of Southeastern Pennsylvania-Bucks County Division | Penn Foundation | Welcoming The Stranger |
| | | Penndel Mental Health Center | Worthwhile Wear, Inc. |
| | | Philadelphia Diaper Bank | YMCA of Bucks County |
| | | Quakertown Community Outreach | YWCA Bucks County |

QNB is proud to be a long-time partner and supporter of United Way of Bucks County

Contributing to organizations in our community since 1877.



215-538-5600 QNBbank.com

Visit any of our 12 locations in Allentown, Colmar, Coopersburg, Dublin, Perkasie, Quakertown, Souderton, Upper Perkiomen Valley, Warminster, & Wescosville



THANK YOU To Our Partner Companies & Organizations



Special thank you to the companies and organizations **listed in blue**. These businesses help our community by hosting an employee giving campaign in their workplace each year.

- | | | | |
|--|---|-------------------------------------|--|
| Advertising Specialty Institute | Bristol Borough School District | CommScope, Inc. | First National Bank & Trust Co. of Newtown |
| Air Products & Chemical | Bristol Township School District | Constellation Energy | Florida Blue |
| AmazonSmile Foundation | Bristol-Myers Squibb | Costco | Foundations Community Partnership |
| American Water | Brooks Instrument (ITW) | Council of Southeastern PA | Fraser Advanced Information Systems |
| Americhem Inc. and Subsidiaries | Bucks County Community College | Council Rock School District | Fulton Financial Corporation |
| AmeriHealth Caritas | Bucks County Courier Times | Customers Bank | Gene & Marlene Epstein Humanitarian Fund |
| Aon | Bucks County Housing Group | Danaher Lynch Family Foundation | Giant Food Stores |
| Aon Affinity Insurance | Bucks County Intermediate Unit #22 | Dark Horse Consulting Fund | Gilbane Building Company |
| Aqua America, Inc. | Bucks County Opportunity Council | Delaware Valley University | GM Service Parts Operation |
| ASI Show | Bucks County Technical High School | Delta Air Lines | Good Friends, Inc. |
| AT&T | Bushnell/Toner Fund | Dow Chemical | Grange Insurance |
| Avery Dennison Corporation | Carroll Engineering Corporation | Dryden Insurance | Greatwide Truckload Management |
| Avient Corporation | Caterpillar Foundation | EG America | Guardian Life Insurance |
| Bank of America | CBRE Group | Eli Lilly & Company | Harkins Builders, Inc. |
| Barnes & Noble, Inc. | Children First | Enterprise Mobility | Health Fitness |
| Battelle | CIGNA | Enterprise Rent-A-Car | Hewlett Packard |
| Big Brothers Big Sisters of Bucks County | CNG - UW Worldwide | Estee Lauder Companies | Hibu |
| BlackRock Financial Management, Inc. | Coldwell Banker Richard Ellis | Exact Sciences Corp | High Hotels Ltd. |
| BMO Financial Group | Combined Federal Campaign | Federal Express Corporation | Holland Middle School |
| Board of Pensions of the Boeing Employees | Comcast Cable | First Commonwealth Bank | |
| | | First Energy | |

AGAIN!

St Luke's



100 TOP HOSPITALS

MAJOR TEACHING HOSPITAL

St. Luke's has been named one of the 100 Top Hospitals in the Nation recognized for excellence in clinical outcomes, operational efficiency, patient experience and financial health.

To learn more visit: stlukes100top.org



Horizon Blue Cross Blue Shield of New Jersey

Hyman Korman Family Foundation

IBM Corporation

Independence Blue Cross

Insaco Incorporated

IQVIA

ITW

J.C. Penney Company, Inc.

Janssen Pharmaceutical, Inc.

Johnson & Johnson, Inc.

Kampi Components Co., Inc.

Key Bank Foundation

Kiwanis Club of Upper Bucks

L3Harris

Lashner Family Fund

Lifespan Adult Day Health Center

Lincoln Financial Group

Lockheed Martin Space Systems Company

Lockton Affinity, LLC

M & C Specialties Co

M&T Bank

Macy's

Manpower

Merck & Company, Inc.

Microsoft

Middle Bucks Institute of Technology

Morrisville School District

Munich Reinsurance America Inc.

Nationwide Insurance

Nelnet

Neshaminy School District

New Jersey Manufacturers Insurance

New Jersey State Employees Charitable Campaign

New York Life Insurance Co.

Newtown Elementary School

Newtown Middle School

Northampton Township

Palisades School District

Parx Casino

PECO

Penn Color, Inc

Penn Community Bank

Penn Environmental & Remediation

Pennsbury Education Association

Pennsbury School District

Pennsylvania Lumbermen's Mutual

Peoples Security Bank & Trust Company

Pfizer International

Pitney Bowes

PNC Financial Services Group, Inc.

PPL Corporation

Precision Medicine Group LLC

Principal Financial Group

Prudential Insurance Company

QNB

Raymond James & Associates, Inc.

Right Management

SC Johnson

Sentry Insurance

Sirius XM

Solenis LLC

Splunk

St. Luke's Quakertown Hospital

St. Mary Medical Center

STD Associates, L.P.

Stryker

SW Calkins Foundation

Syensqo

Target

TD Charitable Foundation

The Albert W Bader Foundation, Inc.

The Giving Branch

The Grundy Foundation

The Jonathan and Carolyn Vitriol Donor Fund

Theta Consulting, LLC

Tierpoint

T-Mobile USA, Inc.

Transamerica

Trinity Products

Truist

Trustmark Companies

U. S. Bank

UHS of Delaware, Inc.

Unitarian Universalist Fellowship of Lower Bucks

United Health Group

United Parcel Service

United States Steel

United Way of Central Indiana

United Way of Greater Atlanta, Inc.

United Way of Greater Milwaukee

United Way of Greater Philadelphia and Southern New Jersey

United Way of Miami-Dade

United Way of Midland County

United Way of Northeast Florida

United Way of Pennsylvania

United Way of South Hampton Roads

United Way of the Chattahoochee Valley

Universal Good Inc

Univest Corporation of PA

UPMC Thomas Starzl Transplant

Vanguard Group

Veolia

Verizon Foundation

W. L. Gore & Associates

Walgreens

Wal-Mart

WAWA Foundation

Wegmans Food Markets, Inc.

Weis Markets

Wells Fargo



Compassionate, personalized primary care. Schedule your appointment today!

At St. Mary Medical Center (now part of Trinity Health Mid-Atlantic), we treat your health concerns, but we see you. That's why we offer a level of tailored care that goes above and beyond and fits your individual needs. Match that personalized care with the knowledge and expertise of a national health system, and you have a level of health care that can't be equaled. We treat you like we all want to be treated — like a person.



Scan the code to schedule an appointment with a Trinity Health Mid-Atlantic primary care provider, or call 844-778-6279 for a referral.



We See All of You™

THANK YOU To Our Leadership Donors

United Way of Bucks County's Leadership Circle recognizes and celebrates the vital importance of personal giving at exceptional levels. Members of our Leadership Circle are people of vision. Their community involvement creates solutions that shape tomorrow. The Leadership Circle is comprised of local leaders and community philanthropists whose gifts of \$500 or more impact the quality of life in our community. Many leadership donors also volunteer and provide guidance throughout the year, help with United Way's affinity groups, and are tremendous influencers in workplace campaigns. We are deeply grateful for their support, generosity, and the incredible impact they make in our community.

Alexis de Tocqueville Society

(\$10,000 to \$99,999)
Estate Of George E. Baringer
Ms. Marissa Christie and Mr. Carl Saalbach
Mr. Neil and Mrs. Renee Hall
Mr. Paul Mullen
Mr. Christopher Picariello
Dr. David Pocalyko
Mrs. Joanne and Mr. Mike Raphael
Ms. Jeane Vidoni

William Penn Society

(\$5,000 to \$9,999)
Mr. Theodore Bredikin
Dr. Richard and Mrs. Anne Coe
Mr. Daniel Lustig
Mr. Heiner and Mrs. Elisa Markhoff
Mr. Jay Markwalder
Mr. John F. McCaughan
Mrs. Catherine C. McElroy
Anonymous Donors - ITW
Anonymous Donors - Target

Vanguard Level

(\$2,500 to \$4,999)
Mr. Brian Barrett
Mr. John and Mr. Charles Bennett
Mr. Michael Boyle
Mr. Kevin Cassidy
Mr. Michael Comprelli
Douglas Czekaj
Ms. Rosario Dimario
Ms. Kristen Elder and Mr. William Angerer
Mr. James Erb
Mr. Michael Farabaugh
Ms. Dawn M. Felix
Ms. Margaret Forrestel
Mrs. Julie Frantz
Mr. and Mrs. David W. Freeman
Mr. Alex and Mrs. Patricia Gorsky
Mr. Robert T. Hanley
Ms. Carole Harper
Mr. Christopher Herbine
Mrs. Karen Johnson-Susko and Mr. James Susko
Mr. and Mrs. Timothy Kiorpes

Mrs. Anne Landis
Mr. William Larkin
Mr. Leonard Lobel
Mrs. Patricia and Mr. Philip McAloon
Ms. Mary K. Meiners
Ms. Jessica Miller
Mr. William and Mrs. Anne Olson
Mr. Ronald Painter
Ms. Faith Parkinson
Doug and Katie Placek
Mrs. Sheri Ratner
Ms. Geetika Ravela
Mr. Manohar Ravela
Ms. Monika Rector
Mr. and Mrs. Harry Rose
Mr. Robert Rousseau
Mr. Chris S. Scott
Mr. Sheldon Simon
Wayne and Dorie Tallman
Ms. Lillian Thomas
Ms. Rebecca Tillet
Ms. Catherine Villella
Mr. Mark and Mrs. Mimi Worthington
Anonymous Donor
Anonymous Donors - Costco

Silver Level

(\$1,500 to \$2,499)
Mr. Michael Barlow
Mr. Richard Battaglia
Ms. Michele Bell
Mr. Stephen A. Biddle
Karen Boyd
Mr. Andrew Brackbill
Paul Braun
Mr. and Mrs. Michael B. Connor
Mr. Dwight and Mrs. Jeri Davis
Ms. Kimberly A. DiPierro
Mr. David and Mrs. Nancy Gondak
Ms. Daphne Hayes
Mr. David Hendricks
Dr. Alan Horwitz and Diana Barbera Horwitz
Ms. Chisoanya Ibegbu
Ms. Christine A. Janssen
Mr. Robert and Mrs. Sharon Kahn

Mr. Larry Kelley
Anne Lamontagne
Mr. Werner and Mrs. Nancy Liebig
Mr. Vince J. Mandes
Mr. Neal Matheson
Timothy McDevitt
Mr. Scott Mittl
Mr. Jason Nadler
Ms. Cheryl Nichols
Mr. Thomas J. Ohntrup
Mr. Dennis Pfleiger
Patrick Ripple
Ms. Nancy S. Rush
Mr. Curtis Sawyer
Mr. David A. Schmel
Mr. Saad Shamsi
Mr. Robert Shoemaker
Mr. Robert F. Smith
Mr. David Thomas
Kimberly West
Anonymous Donors - Enterprise Holdings
Anonymous Donors - Nationwide Insurance

Bronze Level

(\$1,000 to \$1,499)
Mr. Jeffrey Baab
Mr. Neal Babcock and Ms. Kelly Caputo
Matthew Barry
Mr. Randall D. Beaman
Ms. Tricia S. Blair
Mr. Steve Bright
Mr. William T. Bronson
Ms. Elizabeth Bullock
Liangzhong Chen
Ms. Theresa Christian
Mr. Kevin Cornwall
Mr. Lewis Cyr
John Dalicandro
Mr. Brian T. Davies
Mr. Quentin Davis
Ms. Courtney Donnelly
Ms. Maria Evan
Mr. Ralph E. Exton
Ms. Laura Falcon

Mrs. Nikki Farior
Mr. Charles Field
Mr. and Ms. C. Theodore Fritsch Jr.
Mr. John Gabkee
Mr. Casey Gilboy
Mr. Samuel and Mrs. Elizabeth Graham
Ms. Margaret Green
Mr. Bernard Griga
Mr. Joseph Halpin
Ms. Jennifer Hannigan
Ms. Rachel Holler
Mr. A. David Horne
Alyssa Johnson
Mr. David Kinsley
Ms. Karen Kunin
Ms. Robbie Lamb
Mr. Jeffrey Lehocky
Ms. Kimberley Lentz
Mrs. Sandra Lowery
Victoria Makarewicz
Ms. Anna Marie Mauro
Mr. John McHale
Mr. Murray Mckinnon
Mr. Michael Mee
Mrs. Rebecca Menshen
W. Martin Moran
Demeri Mullin
Ms. Amy Musolino
Mr. Ronald D. Myers
Mr. Ryan Nicholl
Mr. Patrick O'Brien
Mr. Doug Oswald
Ms. Purvi Panwala
Mr. Brian and Mrs. Donna Papsun
Mrs. Cathleen and Mr. Gary Plefka
Mr. Joseph Rickers
Mr. Geoffrey S. Roman
Mrs. Jennifer Schlosberg
Ms. Stephanie Schwartzberg
Linda Seifried
Mr. John K. Shaffer
Mr. Paul Stabile
Ms. Jessica X. Su and Mr. Ping Cao
Ms. Sybil Swanson
Ms. Anne Walker
Ms. Kristin Wall



We are proud to support

UNITED WAY OF BUCKS COUNTY

We honor you for the truly meaningful work you do for our community



 339 South Main Street
Doylestown, PA 18901



CONNECT WITH US

psbt.com | 215 348 8207



Bronze Level (continued)

(\$1,000 to \$1,499)
Ms. Dana Weissenberg
Mr. Alexander Whitman
Mr. Edward Wurster
Ms. Cynthia Zacharias
Anonymous Donors -
TD Charitable Foundation
Anonymous Donors - Microsoft
Anonymous Donors - Lincoln
Financial Group

Emerging Leadership Donors

(\$500 to \$999)
Mrs. Ann Arcari Albence
Mr. Timothy Andrews
Mr. Joseph Baldassarre
Ms. Stephanie Bamert
Ms. Lauren Barbir
Mr. Mark Barr
Mr. Steven Baxter
Mr. Paul Bencivengo
Ms. Deborah Bernhardt
Mr. Chad Blue
Mr. Steven Boyd
Tyler Boyles
Shannon Briscoe
Hilary Budny
Mr. Craig A. Bunce
Ms. Christina Burner
Mr. Tom Burns
Donna Carey
Lee Clements
Ms. Neta Collier
Mr. and Mrs. Patrick Counihan
Mr. David Crouthamel
Mr. Jeffrey Culp
Mr. John Darr
Ms. Jane Daveler
Mr. Kirk Devries
Ms. Melanie Dickersbach
Ms. Ellen Dodel
Mr. Jeffrey Durachta
Mr. Stephen Duvall
Angelica Eshbach
Ms. Colleen Esposito
Mr. Christopher Everett
Mr. Joseph Fabrizio
Mr. John A. Farrell
Ms. Maureen Fishel
Mr. Michael Foraker
Mr. and Mrs. William F. Ford
Mr. Kevin Foss
Mr. Gary L. Fox
Mr. Lionel Freitas
Rebecca Fuggiti
Ms. Joan Garber
Joseph Gardner
Mr. Namit Ghildyal
Mr. David Gilbert
Ms. Barbara Glover
Mr. Peter Gordon
Mrs. Falesha Grasty

Mr. Leonard Greaney
Mrs. Margaret Grubbs
Ms. Donna J. Gruber
Mr. Robert Hamilton
Mr. and Ms. Kevin L. Hand
Mr. David Harper
Ms. Krista Harper
Ms. Linda M. Hein
Daniel Heinaman
Mr. Daniel Heine
Mrs. Shannon Hibbs
Ms. Stephanie Hultquist
James Irons
Mr. Wade Jacobson
Mr. Peter Keenan
Ms. Diane Kelley
Ms. Jill Kiefer
Christopher Klatt
Bruce W. Knipe
Michelle Krysko
Susan Kuharcik
Edie and Joe Kwasnoski
Mr. Joseph Kwasnoski
Ms. Dawn N. Leip
Mr. Hiram Levy
Mary E. Liddle
Mr. William P. Liptrot
Ms. Julie Loftus
Ms. Mary Love
Ms. Lauren Lowery
Mr. Yihjiuan Baffin Lu
Mrs. Erin Lukoss
Mr. Christian Manna
Peter Mardaga
Ms. Pamela Martino
Mrs. Cynthia Mascibroda
Ms. Katie Matarazzo
Bonnie and Barry McCabe
Mrs. Christina McDonald
Ms. Marcy McGann
Mr. Randall McGarry
Mrs. Jean McLaughlin
Dr. Dorothy McMullen
Ms. Carol McNiff
Mr. Kenneth Meehan
Ms. Martha Meyer
Robert C. Miller
Mr. Kevin Mitchell
Ms. Kelly Mobley
Kenneth and Jessica Moore
Mrs. Kristi Moreno
Mr. John Mullen
Ms. Angela Nutter
Mr. Charles R. Obrecht
Ms. Bridget O'Brien
Mr. Edward A. Oleynick
Mr. Ernesto Ortiz
Mr. David Palmer
Ms. Melissa Paparone
Ms. Deborah Perelmutter
Mr. Timothy Philpot
Ms. Mary Powell
Mr. Tim Quigley

Ms. Wendy E. Radke
Mrs. Heather Rawa
Ms. Jennifer Reich
Mr. Laurence Reilly
Dinorah Reinmiller
Michael Rettig
Patricia Risse
Mrs. Donna Rowland
Mr. Aidan Ryan
Ms. Christine Ryan
Ms. Hara Salkovitz
Ms. Stephanie Salverian
Ms. Megan J. Sandel
Ms. Jennifer Schacht
Mr. John R. Scheetz
Mr. Gary Schiff
Mr. Ashok Shetty
Mr. Douglas Shields
Ms. Lori Shields
Ms. Kay Silberfeld
Ms. Laura Smith
Thomas Smith
William Smizaski
Mr. Adam Steinberger
Mrs. Sara Stover
Ms. Widya Sulistyowati
Mr. Troy Supplee
Ms. Tracy Tanner
Gagan Tayal
Mr. E. Scott Teschner
Mr. Joseph Thompson
Mr. Robert Thompson
Mr. Michael Trzaska
Jennifer Unrath
Mr. Edward Urankar

Mrs. Alice and Mr. Robert Vernon
Mr. Stephen Waterson
Ms. Michele Weller
Ms. Jordanna Williams
Kevin Wilson
Ms. Theresa Wizemann
Charlene Wolfe
Mr. Allan Yelner
Ms. Barbara Yetman
Ms. Kristin Young
Ms. Stephanie Zajkowski
Mr. George M. Zidek Jr.
Ms. Christine Zitzer
Anonymous Donors - Prudential
Insurance
Anonymous Donors - OneAmerica
Financial Partners
Anonymous Donors - Johnson &
Johnson, Inc.
Anonymous Donors - AT&T
Anonymous Donors - Eli Lilly and
Company

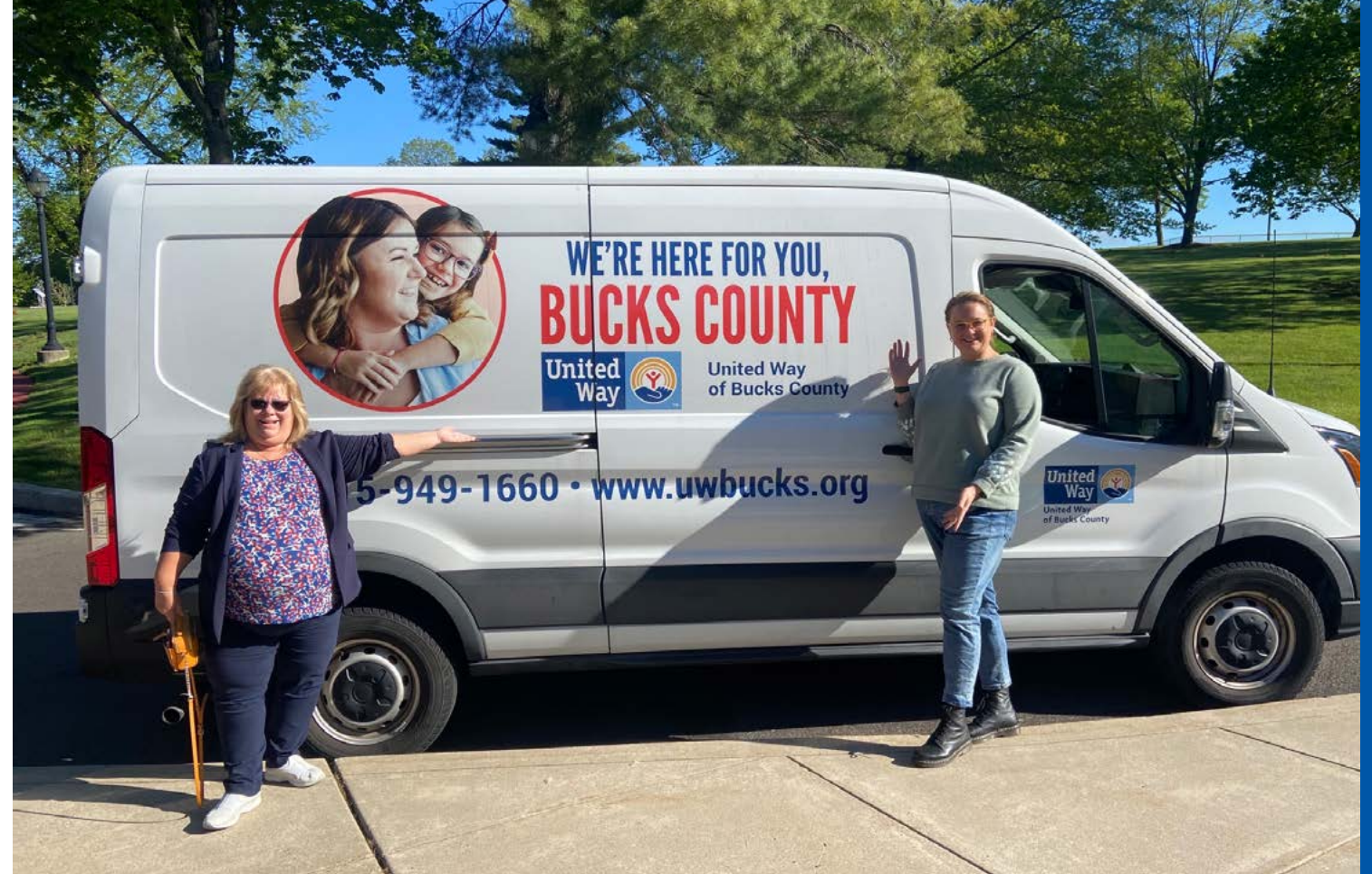
**List based on donation records available at time of printing. Gift amounts include corporate matches when appropriate and represent gifts from the 2023 campaign year. We have made every effort to ensure the accuracy of this document. If an error or omission has occurred, please contact Faith Parkinson at faithp@uwbucks.org.*

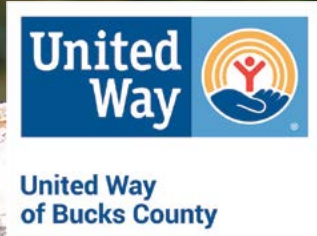




OUR INCREDIBLE DONORS & VOLUNTEERS







LEAVE YOUR LEGACY IN BUCKS COUNTY

Make a difference in people's lives and always be remembered for your contribution. **Learn more at www.uwbucks.org/planned-giving.**

United Way of Bucks County WAYS TO GIVE

When you make United Way of Bucks County your partner in giving, you do more than support people who are in urgent need right now. You create meaningful, lasting change that impacts our entire community.

HOW YOU CAN HELP

Leadership Giving

United Way of Bucks County's Leadership Circle recognizes and celebrates the vital importance of personal giving at exceptional levels.

Members of our Leadership Circle are people of vision. Their community involvement creates solutions that shape tomorrow.

The Leadership Circle consists of local leaders and philanthropists who contribute \$1,000 or more to United Way of Bucks County, significantly enhancing the quality of life in our community.

Learn more about Leadership Giving at uwbucks.org/leadership-giving.

Make a gift using any of the following methods. Learn more at uwbucks.org/planned-giving.

- Donor Advised Funds
- IRA Charitable Giving
- Stocks or Bonds
- Legacy Gift

Sponsorship Opportunities

Sponsorship has incredible value. With your support, we invest in programs that benefit the entire community. A stronger, healthier Bucks County benefits us all, now and in the future.

If you are interested in more information regarding sponsorship opportunities, download our sponsorship brochure at uwbucks.org/sponsorship-opportunities.

Other Ways to Give

When you give to United Way, your contribution helps foster both individual and collective success. Help us strengthen our community by making a donation today.

- **Online Donations:** Go to uwbucks.org/donate to make a one-time or monthly recurring donation.
- **Check Donations:** Mail checks to United Way of Bucks County, 413 Hood Boulevard, Fairless Hills, PA 19030.
- **Matching Gifts:** Many companies match charitable contributions made by their employees, board members, or even retirees. Please ask your human resources office about your company's matching gift policy to see how you can increase your impact.



Planned Giving

Make a difference in people's lives and always be remembered for your contribution. By making a planned bequest, you can help our organization fulfill its mission for many years and generations to come.

Learn more about how you can donate to United Way by visiting uwbucks.org/ways-to-give or scanning the QR Code.





**WE'RE HERE FOR YOU,
BUCKS COUNTY**



Whether you need help or want to help others, we are here for you.
Learn more at www.uwbucks.org/get-help.

United Way of Bucks County HOW TO GET HELP

United Way of Bucks County provides the resources needed to create a stronger, healthier community.

PA 211 Helpline

PA 211 is a free, easy-to-remember number that links people to vital community services. PA 211 is here to help every person in every community access resources for food, housing assistance, and other essential needs. Calls are answered by real people who are part of the PA 211 network.

HELP Center

The HELP Center fills the gap for local families in need by providing essentials like cleaning supplies, personal hygiene items, clothing, food, and home goods – all brand new and completely free of charge – through a dignified personal shopping experience.

Pre-K Education

United Way of Bucks County offers quality early education opportunities to low- and moderate-income families throughout the county.

My Free Taxes

MyFreeTaxes.com is a free web-based tool to file your taxes independently, with phone support available in multiple languages.

Senior Food Boxes

The Senior Food Box Program works to improve the health of low-income seniors by supplementing their diets with nutritious food. Senior food boxes are distributed by Bucks County Opportunity Council, with additional fresh produce provided by United Way of Bucks County.

Fresh Connect

Fresh Connect is a free, mobile farmers market that provides nutritious food to families and seniors in Bucks County each week. Any resident of Bucks County who is food insecure can participate.

Holiday Gift Card Drive

The Holiday Gift Card Drive is our annual initiative that supports local teens and tweens. United Way of Bucks County is committed to making sure every child has a bright holiday season.

Stuff the Bus

Stuff the Bus is our annual school supply drive for children in need. United Way of Bucks County wants to ensure that every student has the tools – and confidence – that they need to excel in the classroom.

LIFT United

LIFT United offers free assistance to help individuals build their financial skills, improve their credit scores, and either refinance their current high-interest car loan into a new, lower-interest loan or secure a low-interest used car loan and help with a down payment.

OTHER COMMUNITY PROGRAMS

Bucks County Food Pantries

There are many food pantries throughout Bucks County that residents can visit. This listing has pantry locations and hours of operation. Visit bcoc.org/food-pantries for more information.

Housing Link

The Bucks County Housing Link is the centralized point of information and referral services for all residents experiencing a housing crisis. Visit buckshousinglink.org for more information.

Bucks County Hub

The Hub links Bucks County residents to services of in-house departments at the County offices and other outside partners. Visit bit.ly/Bucks-HUB for more information.

United Way programs transform lives in Bucks County. Browse programs and resources on this page, visit uwbucks.org/get-help, or scan the QR code to learn more.



CHECKING WITH EARLY DIRECT DEPOSIT.*

Ask us about our checking products today.
Visit PennCommunityBank.com/Products
to learn more.



PennCommunityBank.com | 215.788.1234



**Here
We
Grow.**

*Receive your payroll up to 48 hours before payday. Funds will be made available on the day the payment file is received from your employer, which may be up to 2 days earlier than the scheduled payroll date. Early Direct Deposit feature is available on Free Checking Plus and Student Checking products only. Standard account requirements and additional terms and conditions may apply. Ask for full details. Member FDIC.